



OISE London – Accommodation Options



EXECUTIVE HOMESTAY



CHAPTER RESIDENCE



HOTEL ACCOMMODATION

EXECUTIVE HOMESTAY

Staying in an English home is an excellent way to practise English and experience living in London. The homes are comfortable, and the hosts are welcoming, with a genuine interest in receiving students and helping them to develop fluency in English. Homestays are arranged by an agency on behalf of OISE London.

- Details: single rooms with half-board in zones 2, 3 and 4. There are options for a private bathroom and placement in zone 2, with limited availability and for a supplemental fee.
- Minimum length of stay: one week
- Journey time to OISE London: on average, 50 minutes

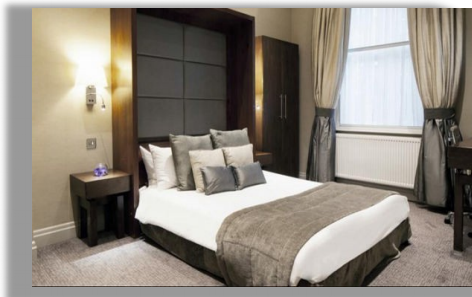


HOTEL ACCOMMODATION

OISE recognises that some students would rather not have to adapt to living in a homestay and prefer to stay in a hotel. Over the years, OISE has built up a good relationship with a range of hotels for all budgets and can make a reservation on the student's behalf.

Please enquire for a list of recommended hotels and prices just moments from OISE London.

- Minimum length of stay: no minimum
- Journey time to OISE London: within a 25 minute walk





OISE London – Accommodation Options

CHAPTER RESIDENCE STUDIOS

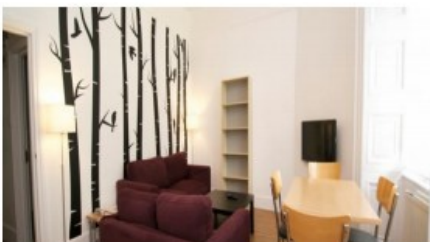
For the more independent student, living in a residence offers the opportunity to experience the atmosphere of the city centre. Stylish, spacious and well designed mini-studios in Kings Cross, Chapter residence is well located with many of London's most famous tourist destinations within easy access.

The rooms are equipped with WiFi connection. The residence offers 24 hour security, café, laundry services and free access to the gym.

- > **Details:** classic self-catered studios with a double bed, an en-suite bathroom, a desk and chair for studying, and packs of kitchen tools and bed linens.
- > **Minimum length of stay:** one week
- > **Journey time:** 26 minutes by public transport



APARTMENTS



Experience living in the centre of London. OISE is in contact with several companies that can offer private and one, two & three bedroom apartments.

This option is ideal for students bringing their families to the UK.

- > **Minimum length of stay:** one week
- > **Journey time:** on average, 9 minutes on foot

For more information, please contact OISE London at london@oise.com or by telephone on +44 (0) 207 631 0511.